

# Encrypted CDs & DVDs

BUILT-IN BURNING & ENCRYPTION USING  **EncryptDisc™**



## THE DISC THAT PROTECTS ITSELF

- **Exclusive** technology only available in Europe UNTIL NOW
- Features embedded government-strength encryption **AES 256-bit Encryption FIPS 140-2, Level 1 Certified** Certificates 562, 819 • SHA-512 Hash
- **Built-in** disc burning that does not allow non-encrypted data to be written to the CD or DVD for extra protection
- Unique disc format on high quality Imation™ media

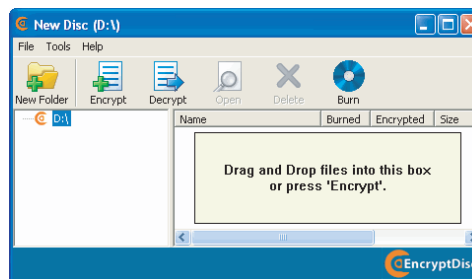
## BENEFITS OF ENCRYPTED CDs & DVDs



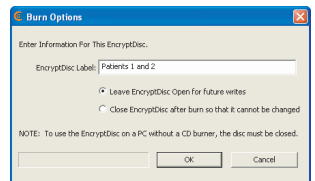
- Allows users that currently cannot use USB Flash Drives to safely transport, share and archive sensitive data
- **Built-in** burning makes backup & archival easy
- Optional management software allows organizations to set security policy controls for the Encrypted CDs & DVDs

Ordering Information	
NSN	Description
7045-00-NIB-0346	CD-R Single with Jewel Case
7045-00-NIB-0347	CD-R 10PK with Jewel Case
7045-00-NIB-0348	CD-R 25PK Spindle
7045-00-NIB-0350	DVD-R Single with Jewel Case
7045-00-NIB-0351	DVD-R 10PK with Jewel Case
7045-00-NIB-0349	DVD-R 25PK Spindle

## USER-FRIENDLY APPLICATION



'Drag and Drop' interface makes adding data to the disc easy.



- Supports Windows 2000/XP/Vista/Windows 7
- No third-party software installation required
- Easily share Encrypted CDs & DVDs from PC to PC

## LEARN MORE ABOUT OUR PROGRAM • FEDERAL ACQUISITION REGULATION (FAR) SUBPART 8.7

SKILCRAFT® Encrypted CDs and DVDs are supplied by North Central Sight Services, Inc., Williamsport, PA 17701 • Our Focus is Your Vision  
SKILCRAFT trademark is licensed by National Industries for the Blind.



**SKILCRAFT® Encrypted CDs and DVDs utilize EncryptDisc™ technology by EncryptX.**

**What is EncryptDisc™?**

EncryptDisc™ is a self-encrypting optical disc, that allows you to encrypt and protect sensitive information on the disc without needing any additional software on your PC.

**What operating systems can you use the SKILCRAFT® Encrypted CDs and DVDs on?**

EncryptDisc™ is compatible with Microsoft Windows 2000, XP, Vista, Windows 7, Server 2000, Server 2003 & Server 2008 operating systems. Mac is currently not supported by EncryptDisc™.

**Can I make a backup copy of my EncryptDisc?**

No. If you attempt to copy your EncryptDisc, you will not be able to access the data on the copy.

**What FIPS certification does EncryptDisc™ have?**

EncryptDisc™ uses the Advanced Encryption Standard (AES) 256-bit, Rijndael encryption engine. It uses the Crypto++® v5.2.3 cryptographic module which is FIPS 140-2 Level 1 certified by the U.S. National Institute of Standards (NIST certificate #562).

**What is a managed EncryptDisc™ that is available through SKILCRAFT®?**

Managed EncryptDiscs communicate with an EncryptDisc™ Management Server over the Internet. Managed EncryptDiscs have additional server-based password recovery that can guarantee that the password can be recovered even if you forget both the password and the recovery hint answer on the disc. Managed Discs can also be remotely disabled if they are lost or stolen. To find out more of the Management Server capabilities, click on the "Administrative Server Capabilities" icon in the Advanced Help tab of the Help tutorial found in the Help menu.

**Do EncryptDiscs require local Administrative privileges to use?**

On Microsoft Windows 2000 and Windows XP a user must have local Administrative privileges to write to optical discs. This is due to security features in the operating system. This restriction was eliminated in Windows Vista and Windows 7. A system administrator can give non-Administrators the ability to write to EncryptDiscs by installing the NMSaccess.exe program located on the EncryptDisc™ in the SecurFS\non-Admin folder.

**Can I use other CD Mastering programs with an EncryptDisc?**

No. EncryptDisc™ contains it's own built-in burning/mastering functionality. Do not use other third-party applications such as Nero, EZ CD Creator, Toast, or even the built-in CD/DVD burning functionality of Microsoft Windows to burn files to EncryptDisc™. These applications will not encrypt your data and may corrupt the file system written by the EncryptDisc™ software and make it impossible for you to access your encrypted files.

**Why does the available space on my EncryptDisc decrease when I delete files instead of increase?**

Once data has been burned on to a CD-R or DVD-R it cannot be erased or written over. It can only be made inaccessible. Deleted files cannot be seen or accessed but the space they have used cannot be recovered. Writing the new file directory without the deleted files takes additional space on the disc.

**Why does the available space on my EncryptDisc decrease when I only write a 1MB file to it?**

Each time a disc is burned, approximately 15MB is used to rewrite the current file structure (directory) on the disc. This is known as lead-out. You can find out information about your EncryptDisc, including disc type, and the remaining space available on the disc by choosing EncryptDisc Info from the Tools menu.

**Why does the EncryptDisc still say my password is expired when I just changed it?**

Password changes must be burned into the EncryptDisc for them to be remembered. If you close the EncryptDisc application without burning your password change, it will be lost.

**Why won't the EncryptDisc accept my password recovery answer?**

Password recovery hint answers are case-sensitive and must be at least 8 characters long. Try using different combinations of lower and upper case that you might have used when you set the hint question and answer.