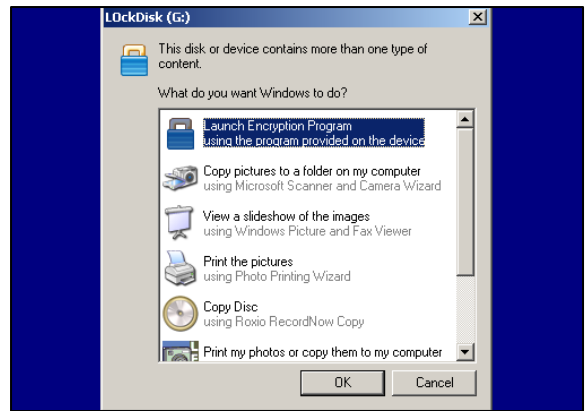


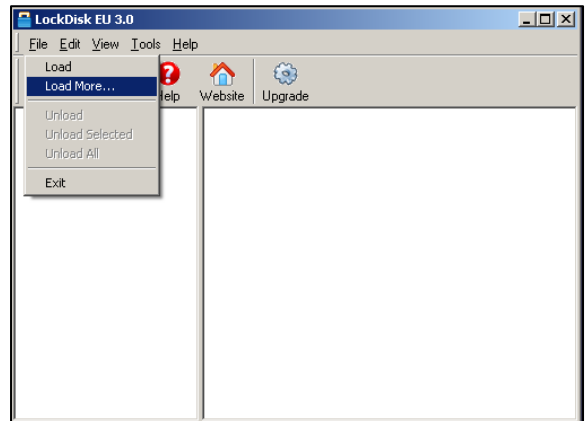


Loading Your Encrypted Vault

1. Insert Flash Drive into an open USB port. An *AutoRun* dialogue box will appear.
2. Select Launch Encryption Program. Click OK.

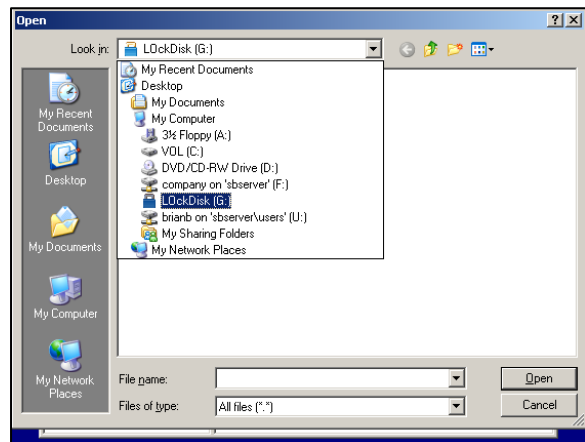


3. From the LockDisk EU 3.0 program window, open the file menu and select LOAD MORE

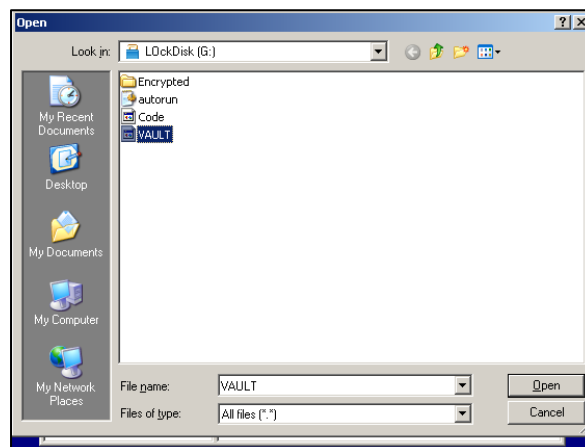


4. When the Open dialogue box appears, navigate to your Flash Drive, the drive letter will vary pending the total number of drives connected to the computer. The flash drive will be titled LockDisk.

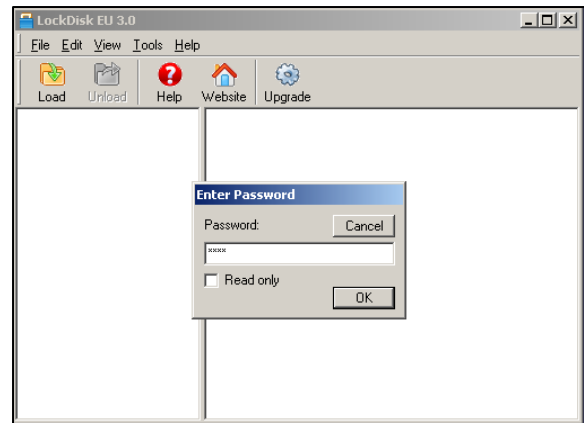
When you select the Flash Drive, there are a list of files contained on the Flash Drive. Do not delete these files at any time. You will not be able to access the secure area of the Flash Drive without these files.



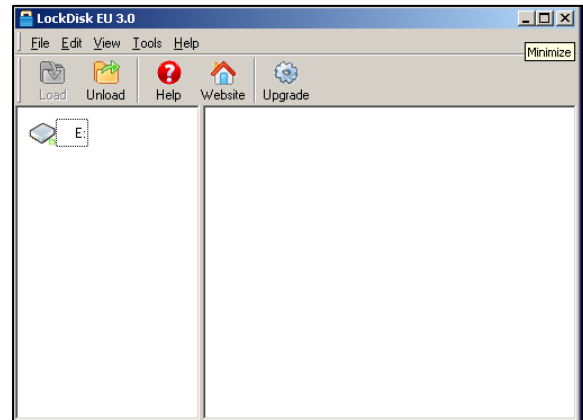
5. Select the file titled VAULT. Click the Open button.



6. The Enter Password Dialogue Box will appear. Your temporary password is 1234. Type 1234 and click the OK Button.

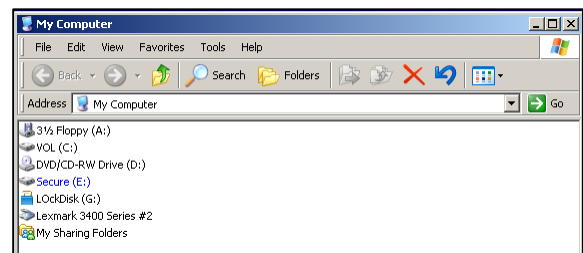


The encrypted vault will appear in the left pane of the LockDisk EU 3.0 window and the contents of the vault will appear in the right pane of the same window.



7. Minimize the LockDisk EU 3.0 program window by clicking the Minimize button in the upper right corner.

Your encrypted vault will now appear in MY COMPUTER and will be titled SECURE. Depending on your system's drive configuration, the drive letter will vary from computer to computer.



Closing the Vault and Exiting the LockDisk Program

1. Close all programs and open files that are running from the VAULT.

2. Right-click on the LockDisk EU 3.0 program icon, located in the Task Bar, and select EXIT.

Your SECURE disk will be closed and inaccessible. The drive will no longer appear in MY COMUTER.

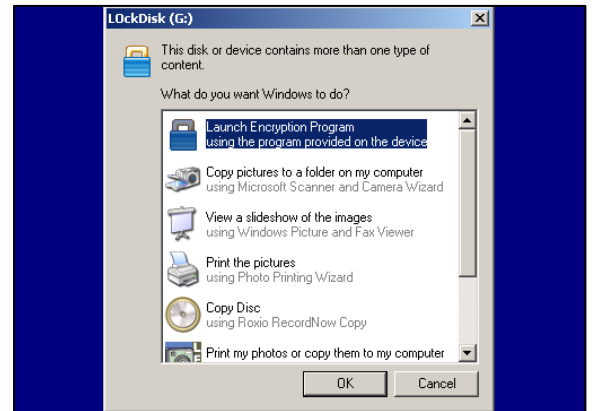


Changing the default password on your SECURE DRIVE

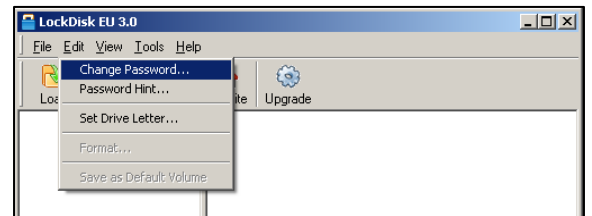
1. Insert the Flash Drive into an open USB port.

2. Select Run Encryption Program and click OK.

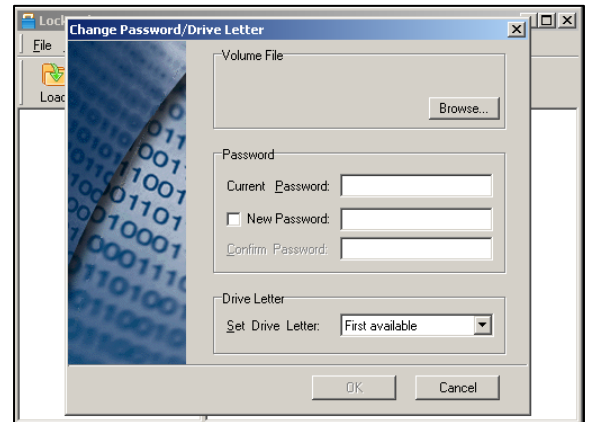
3. Instead of entering a password, press the ESC key on your keyboard, to cancel the loading of your SECURE DRIVE. The LockDisk EU 3.0 program window will open.



4. From the Edit Menu, select Change Password.

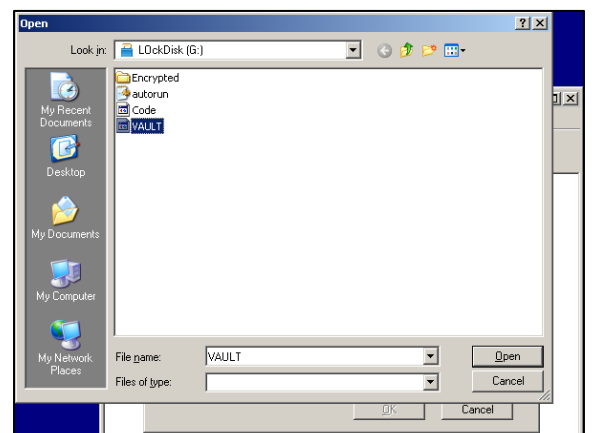


5. Click the Browse button.



6. Navigate to the Flash Drive, if it is not already selected. It will be labeled LockDisk.

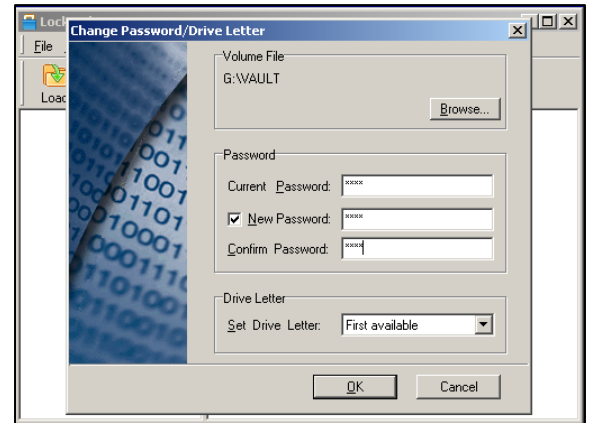
7. Select the file titled VAULT and click the Open button.



8. In the Current Password box, type the default password 1234, check the box located to the left of New Password.

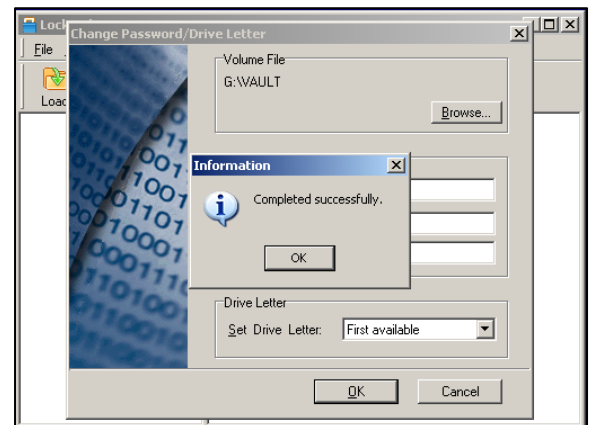
9. Type a new password in the New Password box. We recommend that you use a “strong” password that contains letters, numbers, *and* special characters (example: Red-Blue*2007).

9. Retype the new password in the Confirm Password box. Then click OK.



10. A box will appear stating that the password change was Completed Successfully. Click OK to close this box.

To load your SECURE DRIVE again, repeat the steps above for “Loading Your Encrypted Vault.”



For troubleshooting tips, please see the following page.

Troubleshooting FAQ's

Q. *My computer detects the Flash Drive as new hardware, but the AutoRun box does not appear. How do I load my encrypted drive?*

A. Not all computers are set up to use *Autorun*. You will need to manually start the program. Open MY COMPUTER and then open the Flash Drive which will be titled LockDisk. Open the folder called Encrypted. In this folder you will find several files. Do not delete these files. Launch the LockDisk program by double-clicking the file titled EU with a Padlock icon. Follow the directions for Loading Your Encrypted Vault detailed above.

Q. *My Flash Drive is detected, but it does not show up in MY COMPUTER.*

A. This is an issue with the Windows operating system that occurs on computers with more than one network drive. The Flash Drive is not defective. The computer does not assign the Flash Drive a drive letter. Here are the steps to manually assign a drive letter.

- 1. Right-click on the MY COMPUTER and select Manage.**
- 2. On the left pane of the Computer Management window, click on the Disk Management. Information about the drive configuration will be displayed on the right panel.**
- 3. Right-click on the Flash Drive, located in the upper section of the right panel. Select Change Drive Letter and Paths. The Flash Drive should be automatically highlighted in the Change Drive Letter and Paths dialogue box.**
- 4. Click the Change button. We recommend that you choose (G) as the drive letter. (G) is usually the first drive letter available. If your computer already has drive (G), select the next available drive letter.**
- 5. Click OK after selecting the letter. Click Yes to confirm.**
- 6. Remove the Flash Drive. Right-click on the Safely Remove Hardware green arrow icon in the Task Bar. Select the Flash Drive and click Stop. The Stop a Hardware Device box will appear. Select the drive, click OK. The task bar will indicate when it is safe to remove the Flash Drive.**
- 7. Reinsert the drive into the USB port. The Flash Drive will appear in MY COMPUTER with the assigned drive letter.**

Q. When I take my Flash Drive from computer to computer, LockDisk crashes. Why does this happen?

A. LockDisk creates a “pointer file” that remembers the path to your VAULT. This file allows LockDisk to load faster and immediately prompt you for your password rather than making you go through the “LOAD MORE” command.

The program may crash when you take your Flash Drive to a computer which has a different drive configuration because the VAULT file cannot be located where LockDisk is expecting it to be. Don't worry! Your VAULT and encrypted files are still there.

You will have to manually reload LockDisk. Use the directions in the previous Q and A. Use the LOAD MORE command to regain access to your SECURE drive.

Q. Is there a “Back Door” or “Master Password” that I can use to regain access to my SECURE Drive, if I forgot my password?

A. No, if you forget your password, you will be unable to access your SECURE drive. This type of software does not allow for Back Door Entry for maximum data protection.

Q. I accidentally reformatted my Flash Drive, how can I get back into my SECURE Drive?

A. If you reformat the Flash Drive, all data is lost, INCLUDING your VAULT file. The SECURE DRIVE is actually an encrypted file called “VAULT” that is located on your Flash Drive. If this file is deleted or your Flash Drive is erased or reformatted, all the data in the SECURE disk will be lost.

We recommend backing up your vault periodically to your computer or external hard drive. As long as the files are contained inside of the encrypted vault, they will be protected.

Q. I deleted the folder called Encrypted from my flash drive, how do I get the program back on my drive?

A. Contact Tech Support at 1-866-320-2580 and we will gladly assist you. Our Tech Support is available Monday-Friday, 9AM to 4PM Eastern Standard Time. You can also e-mail sales@ncsight.org.